



HR heliklima®

- Tubo PE-RT multicapa

HR klimapress®

- Accesorios press para tubos PE-RT multicapa

HR pexroma®

- Tubo polietileno reticulado (PE-Xa) c/s barrera anti-difusora de oxígeno (EVOH)

HR romaplus®

- Tubo polietileno c/s barrera anti-difusora de oxígeno (EVOH)



HR heliklima®



TUBO HELIKLIMA(Multicapa)



Ref.				€
P-PERTAL16	16x2,0	100	-	1,560
P-PERTAL18	18x2,0	100	-	1,960
P-PERTAL20	20x2,0	100	-	2,120
P-PERTAL25	25x2,5	50	-	3,960
P-PERTAL32	32x3,0	50	-	5,680
P-PERTAL16B	16x2,0	-	4/200	1,880
P-PERTAL18B	18x2,0	-	4/160	2,360
P-PERTAL20B	20x2,0	-	4/160	2,340
P-PERTAL25B	25x2,5	-	4/100	4,070
P-PERTAL32B	32x3,0	-	4/80	6,390
P-PERTAL40B	40x4,0	-	5/75	15,990
P-PERTAL50B	50x4,5	-	5/50	21,800
P-PERTAL63B	63x6,0	-	5/25	34,100
PERTAL75B	75x7,5	-	5/15	64,500
PERTAL90B	90x8,5	-	5/10	278,760
PERTAL110B	110x10,0	-	5/5	317,000

HR klimapress®

UNIÓN ROSCA HEMBRA



Ref.				€
K234016	16x1/2"	40	320	2,933
K234018	18x1/2"	40	320	3,343
K234019	18x3/4"	30	240	4,161
K234020	20x1/2"	40	320	3,370
K234021	20x3/4"	30	240	3,981
K234026	25x1/2"	20	160	4,622
K234025	25x3/4"	20	160	5,147
K234027	25x1"	18	144	7,123
K234033	32x3/4"	18	144	6,434
K234032	32x1"	18	144	7,273
K234040	40x1 1/4"	1	84	21,609
K234051	50x1 1/4"	1	48	27,778
K234050	50x1 1/2"	1	20	28,712
K234063	63x2"	1	16	46,779
K234075	75x2 1/2"	1	-	97,686
K234075*	75x2 1/2"	1	-	264,592
K234090*	90x3"	1	-	597,042
K2340110*	110x4"	1	-	769,000

UNIÓN ROSCA MACHO



Ref.				€
K325016	16x1/2"	50	400	2,594
K325018	18x1/2"	40	320	2,636
K325019	18x3/4"	35	280	2,933
K325020	20x1/2"	40	320	2977
K325021	20x3/4"	35	280	3,903
K325026	25x1/2"	20	160	6,419
K325025	25x3/4"	18	144	5,063
K325027	25x1"	16	128	6,707
K325033	32x3/4"	12	96	6,343
K325032	32x1"	12	96	6,340
K325040	40x1 1/4"	1	64	21,591
K325050	50x1 1/2"	1	45	28,102
K325063	63x2"	1	20	54,054
K325075	75x2 1/2"	1	14	81,900
K325075*	75x2 1/2"	1	-	115,336
K325090*	90x3"	1	-	272,770
K3250110*	110x4"	1	-	350,096

UNIÓN



Ref.				€
K200016	16x16	45	360	2,247
K200018	18x18	36	288	2,479
K200020	20x20	36	288	3,119
K200025	25x25	20	160	5,932
K200032	32x32	12	96	7,797
K200040	40x40	1	60	20,896
K200050	50x50	1	36	24,877
K200063	63x63	1	15	56,359
K200075	75x75	1	12	79,800
K200075*	75x75	1	-	193,686
K200090*	90x90	1	-	435,116
K2000110*	110x110	1	-	646,849

UNIÓN CON TUERCA LOCA



Ref.				€
K234016-L	16x1/2"	40	384	3,233
K234018-L	18x1/2"	40	320	3,800
K234020-L	20x1/2"	40	320	3,650
K234021-L	20x3/4"	30	240	5,690
K234025-L	25x3/4"	18	144	6,500
K234032-L	32x1"	14	112	9,933

CODO ROSCA MACHO



Ref.				€
K209016	16x1/2"	25	200	3,817
K209018	18x1/2"	20	160	3,886
K209020	20x1/2"	20	160	4,449
K209025	25x3/4"	12	96	6,572
K209026	25x1/2"	15	120	6,761
K209032	32x1"	8	64	10,099
K209075*	75x21/2"	1	-	183,716
K209090*	90x3"	1	-	344,224

CODO 90°



Ref.				€
K206016	16x16	32	256	2,553
K206018	18x18	22	176	3,040
K206020	20x20	22	176	3,720
K206025	25x25	11	88	6,967
K206032	32x32	8	64	11,300
K206040	40x40	1	40	29,967
K206050	50x50	1	26	44,187
K206063	63x63	1	10	73,300
K206075	75x75	1	6	115,553
K206075*	75x75	1	-	212,530
K206090*	90x90	1	-	521,643
K2060110*	110x110	1	-	K2080110+K3250110

REDUCCIÓN



Ref.				€
K238018	18x16	37	296	1,980
K238020	20x16	37	296	2,824
K238021	20x18	30	240	3,033
K238025	25x16	20	160	4,312
K238027	25x18	20	160	4,386
K238026	25x20	20	160	4,601
K238032	32x20	15	120	6,150
K238033	32x25	12	96	6,966
K238042	40x25	1	72	16,560
K238043	40x32	1	60	17,534
K238052	50x25	1	65	25,213
K238053	50x32	1	50	23,300
K238054	50x40	1	42	27,378
K238064	63x40	1	18	61,476
K238065	63x50	1	20	63,872
K238076	75x63	1	13	78,096

CODO HEMBRA C/ PLACA



Ref.				€
K212016	16x1/2"	15	120	5,330
K212018	18x1/2"	15	120	5,800
K212020	20x1/2"	14	112	6,443
K212025	25x3/4"	10	80	12,267

CODO ROSCA HEMBRA

*



Ref.				€
K208016	16x1/2"	30	240	3,527
K208017	16x3/4"	20	160	4,983
K208018	18x1/2"	25	200	3,867
K208019	18x3/4"	20	160	5,500
K208020	20x1/2"	25	200	4,000
K208021	20x3/4"	20	160	4,874
K208025	25x3/4"	15	120	6,761
K208026	25x1/2"	16	128	5,460
K208027	25x1"	10	80	10,142
K208033	32x3/4"	12	96	9,476
K208032	32x1"	8	64	10,293
K208042	40x1 1/2"	1	30	27,327
K208041	40x1 1/4"	1	50	26,222
K208040	40x1"	1	52	20,293
K208051	50x1 1/2"	1	30	36,213
K208050	50x1"	1	30	26,898
K208063	63x2"	1	10	68,544
K208075	75x2 1/2"	1	10	129,780
K208075*	75x2 1/2"	1	-	170,328
K208090*	90x3"	1	-	383,868
K2080110*	110x4"	1	-	502,607

TE SIMPLE

*



Ref.				€
K230016	16x16x16	20	160	4,183
K230018	18x18x18	14	112	4,325
K230020	20x20x20	14	112	5,337
K230025	25x25x25	8	64	10,288
K230032	32x32x32	4	32	14,593
K230040	40x40x40	1	25	43,123
K230050	50x50x50	1	15	59,431
K230063	63x63x63	1	6	110,216
K230075	75x75x75	1	5	144,000
K230075*	75x75x75	1	-	307,482
K230090*	90x90x90	1	-	677,040
K2300110*	110x110x110	1	-	K3250110+K2320110

TE REDUCCIÓN



Ref.				€
K231018	16x20x16	18	144	5,270
K231016	16x25x16	10	80	8,980
K231014	18x16x16	20	160	4,167
K231015	18x16x18	18	144	4,049
K231017	20x16x16	20	160	4,650
K231020	20x16x20	18	144	5,429
K231019	20x18x20	14	112	5,354
K231021	20x20x16	18	144	5,700
K231022	20x25x20	10	80	8,284
K231024	25x16x16	12	96	9,876
K231039	25x16x18	10	80	6,844
K231029	25x16x20	10	80	6,696
K231025	25x16x25	10	80	9,648
K231034	25x18x25	8	64	6,892
K231023	25x20x16	12	96	6,907
K231027	25x20x20	10	80	6,993
K231026	25x20x25	8	64	8,712
K231038	25x25x18	7	56	6,898
K231028	25x25x20	7	56	8,762
K231031	25x32x25	7	56	13,551
K231030	32x16x32	8	64	10,896
K231037	32x18x32	8	64	9,448
K231032	32x20x32	6	48	11,362
K231035	32x25x25	6	48	19,360
K231033	32x25x32	6	48	12,882
K231042	40x25x40	1	28	34,559
K231043	40x32x40	1	28	42,222
K231053	50x32x50	1	21	44,118
K231055	50x40x50	1	18	60,889
K231064	63x40x63	1	10	84,208
K231065	63x50x63	1	8	86,667
K231076	75x63x75	1	7	171,600

DISTRIBUIDOR



Ref.				€
K2520201616	25x20x20x16x16	3	24	30,226
K2520161616	25x20x16x16x16	3	24	37,588

TE ROSCA MACHO



Ref.				€
K233016	16x1/2"x16	16	128	5,366
K233018	18x1/2"x18	12	96	6,078
K233020	20x1/2"x20	12	96	6,197
K233025	25x3/4"x25	5	40	10,919
K233026	25x1/2"x25	5	40	10,643
K233032	32x1"x32	4	32	21,377

VÁLVULA DE CIERRE (CUERPO)



Ref.				€
K244016-C	16	12	96	16,290
K244018-C	18	5	40	16,290
K244020-C	20	10	80	17,290
K244025-C	25	8	64	20,990
K244032-C	32	6	48	29,833

REGULACIÓN OCULTA



Ref.				€
K1632-RO	16-32	5	40	7,833

TE ROSCA HEMBRA

*



Ref.				€
K232016	16x1/2"x16	16	128	5,366
K232018	18x1/2"x18	15	120	6,173
K232020	20x1/2"x20	15	120	6,197
K232025	25x3/4"x25	8	64	10,920
K232026	25x1/2"x25	10	80	8,139
K232032	32x1"x32	4	32	21,373
K232041	40x1 1/4"x40	1	18	41,799
K232040	40x1"x40	1	24	34,984
K232051	50x1 1/2"x50	1	18	58,634
K232050	50x1"x50	1	18	47,018
K232065	63x2"x63	1	10	110,778
K232063	63x1"x63	1	10	84,208
K232064	63x2 1/2"x63"	1	6	123,358
K232075	75x2 1/2"x75	1	5	183,000
K232075*	75x2 1/2"x75	1	-	264,592
K232090*	90x3"x90	1	-	597,042
K2320110*	110x4"x110	1	-	812,216

PALANCA



Ref.				€
K1632-CP	16-32	5	40	10,500

KIT AUMENTO P/ VÁLVULA DE CIERRE



Ref.			€
K1632-25	25	1	7,200

HR pexroma®

PE-Xa



Ref.				€
P-011016-XA	16x1,8	100	-	1,060
P-001016-XA	16x2,0	100	-	1,080
P-011020-XA	20x1,9	100	-	1,550
P-001020-XA	20x2,0	100	-	1,869
P-001025-XA	25x2,3	50	-	2,400
P-011032-XA	32x2,9	50	-	6,336
P-011016-XAB4	16x1,8	-	4/200	1,261
P-011020-XAB4	20x1,9	-	4/160	1,816
P-011025-XAB4	25x2,3	-	4/100	2,916
P-011032-XAB4	32x2,9	-	4/80	6,668

PE-Xa (EVOH)



Ref.			€
P-011016-XAEVAL	16x1,8	120/200/240/500	1,536
P-011020-XAEVAL	20x1,9	120/200/240/500	2,192

LIMITADO A EXISTENCIAS.

HR romaplus®

PE-RT



Ref.			€
P-001016-RT	16x2,0	100	0,734
P-001020-RT	20x2,0	100	0,947
P-001025-RT	25x2,3	50	1,387
P-011032-RT	32x2,9	50	2,320

PE-RT (EVOH)



Ref.			€
P-011016-RTB	16x1,8	240/500	0,745
P-011020-RTB	20x1,9	240/500	1,092

HR helisystem[®]

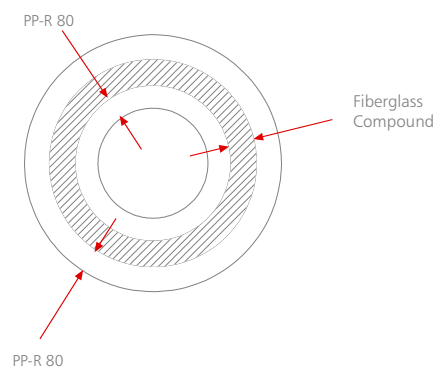
Tubos y accesorios PP-R Heliroma

HR romafaser[®]

Tubo PP-R con fibra de vidrio

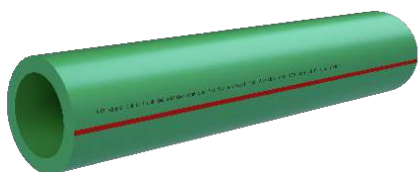
HR romaklima[®]

Tubo PP-R con fibra de vidrio



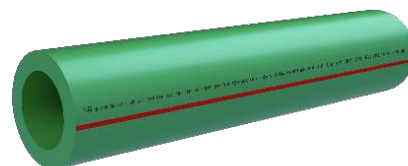
Available colors: ● Ral Design System 150 50 30 ● Ral Design System 270 30 35 ● Ral Design System 100 90 05

TUBO HELISYSTEM PP-R 80 SDR7,4 / S. 3,2 (PN16)



Ref.	∅ (mm) nominal	— (mm)	—	●	●	€
P-15020	20	2,8	4/160	✓		0,999
P-15025	25	3,5	4/100	✓		1,498
P-15032	32	4,4	4/80	✓		2,560
P-15040	40	5,5	4/60	✓		3,980
P-15050	50	6,9	4/40	✓		5,780
P-15063	63	8,6	4/20	✓		8,980
P-15075	75	10,3	4/12	✓		15,971
P-15090	90	12,3	4/8	✓		20,750
P-150110	110	15,1	4/4	✓		30,450

TUBO HELISYSTEM PP-R 80 SDR6 / S. 2,5 (PN20)



Ref.	∅ (mm) nominal	— (mm)	—	●	●	€
P-16020	20	3,4	4/160	✓	✓	1,057
P-16025	25	4,2	4/100	✓	✓	1,600
P-16032	32	5,4	4/80	✓	✓	3,029
P-16040	40	6,7	4/60	✓	✓	4,657
P-16050	50	8,3	4/40	✓	✓	6,171
P-16063	63	10,5	4/20	✓	✓	9,857
P-16075	75	12,5	4/12	✓	✓	17,400
P-16090	90	15,0	4/8	✓	✓	21,725
P-160110	110	18,3	4/4	✓	✓	32,000

TUBO CON FIBRA DE VIDRIO ROMA KLIMA SDR 11 / S.5



PP-R / PP-R GF / PP-R

Ref.	∅ (mm) nominal	— (mm)	—	●	●	€
P-14020-FR	20 SDR7,4	2,8	4/160	✓		1,350
P-14025-FR	25 SDR7,4	3,5	4/100	✓		1,930
P-14032-FR	32	2,9	4/80	✓		2,598
P-14040-FR	40	3,7	4/60	✓		3,771
P-14050-FR	50	4,6	4/40	✓		5,567
P-14063-FR	63	5,8	4/20	✓		8,514
P-14075-FR	75	6,8	4/12	✓		11,987
P-14090-FR	90	8,2	4/8	✓		16,886
P-140110-FR	110	10,0	4/4	✓		25,678

TUBO CON FIBRA DE VIDRIO ROMA KLIMA CT SDR 17 / S.8

NOVEDAD



PP-R CT / PP-R GF / PP-R CT

Ref.	∅ (mm) nominal	— (mm)	—	●	●	€
P-140125-FRCT	125	7,4	4/4	✓		40,343
P-140160-FRCT	160	9,5	5,8/11,8	✓		66,914
P-140200-FRCT	200	11,9	5,8/11,8	✓		120,657
P-140250-FRCT	250	14,8	5,8/11,8	✓		141,000
P-140315-FRCT	315	18,7	5,8/11,8	✓		223,257
P-140355-FRCT	355	21,1	5,8/11,8	✓		283,171
P-140400-FRCT	400	23,7	5,8/11,8	✓		359,543

Available colors: ● Ral Design System 150 50 30 ● Ral Design System 270 30 35 ● Ral Design System 100 90 05

TUBO CON FIBRA DE VIDRIO ROMAFASER SDR 7,4 / S.3,2



PP-R / PP-R GF / PP-R

TUBO CON FIBRA DE VIDRIO ROMAFASER CT SDR 11 / S.5

NOVEDAD

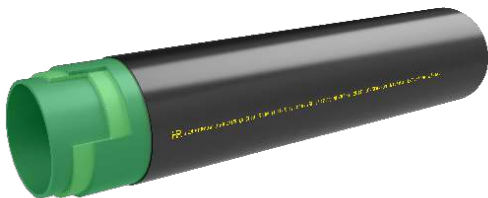


PP-R CT / PP-R GF / PP-R CT

Ref.	∅ (mm) nominal	mm (mm)	mm	●	●	€
P-16020-F	20	2,8	4/160	✓	✓	1,350
P-16025-F	25	3,5	4/100	✓	✓	1,930
P-16032-F	32	4,4	4/80	✓	✓	3,120
P-16040-F	40	5,5	4/60	✓	✓	4,450
P-16050-F	50	6,9	4/40	✓	✓	6,780
P-16063-F	63	8,6	4/20	✓	✓	10,340
P-16075-F	75	10,3	4/12	✓	✓	14,343
P-16090-F	90	12,3	4/8	✓	✓	20,560
P-160110-F	110	15,1	4/4	✓	✓	31,450

Ref.	∅ (mm) nominal	mm (mm)	mm	●	●	€
P-16020-FCT	20 SDR7,4	2,8	4/160	✓		1,350
P-16025-FCT	25 SDR7,4	3,5	4/100	✓		1,930
P-16032-FCT	32 SDR7,4	4,4	4/80	✓		3,120
P-16040-FCT	40	3,7	4/60	✓		4,450
P-16050-FCT	50	4,6	4/40	✓		6,780
P-16063-FCT	63	5,8	4/20	✓		10,340
P-16075-FCT	75	6,8	4/12	✓		14,343
P-16090-FCT	90	8,2	4/8	✓		20,560
P-160110-FCT	110	10,0	4/4	✓		31,450
P-160125-FCT	125	11,4	4/4	✓		47,980
P-160160-FCT	160	14,6	5,8/11,8	✓		76,980
P-160200-FCT	200	18,2	5,8/11,8	✓		181,286
P-160250-FCT	250	22,7	5,8/11,8	✓		213,114

TUBO CON FIBRA DE VIDRIO ROMAFASER SDR 7,4 / S.3,2 - Anti-UV



PP-R / PP-R GF / PP-R / PP-R anti-UV

Ref.	∅ (mm) nominal	mm (mm)	mm	●	●	€
P-16020-FUV	20	2,8	4/160	✓		2,343
P-16025-FUV	25	3,5	4/100	✓		3,371
P-16032-FUV	32	4,4	4/80	✓		5,314
P-16040-FUV	40	5,5	4/60	✓		8,314
P-16050-FUV	50	6,9	4/40	✓		11,943
P-16063-FUV	63	8,6	4/20	✓		18,714
P-16075-FUV	75	10,3	4/12	✓		25,171

Available colors: ● Ral Design System 150 50 30 ● Ral Design System 270 30 35 ● Ral Design System 100 90 05

CODO 90°

<=125 - Soldadura Macho/Hembra
>125 - Soldadura a Top

Ref.	Ø (mm)	📦	📦	●	●	●	€
P-CT206020	20	40	320	✓	✓		0,320
P-CT206025	25	20	200	✓	✓		0,413
P-CT206032	32	10	100	✓	✓		0,723
P-206040	40	5	50	✓	✓		1,343
P-206050	50	4	32	✓	✓		2,525
P-206063	63	2	16	✓	✓		3,629
P-206075	75	1	11	✓	✓		6,600
P-206090	90	1	6	✓	✓		13,000
P-2060110	110	1	4	✓	✓		21,200
P-2060125	125	1	2	✓			34,714
P-2060160	160	1	2	✓			55,857

Accesorios fabricados en PP-RCT - SDR11

CT2060200	200	1	1	✓			240,000
CT2060250	250	1	1	✓			520,000
CT2060315	315	1	1	✓			933,000
CT2060355*	355(SDR17)	1	1	✓			1370,000
CT2060400*	400(SDR17)	1	1	✓			1744,000

*Accesorios Manufacturados

CODO 45°

<=125 - Soldadura Macho/Hembra
>125 - Soldadura a Top

Ref.	Ø (mm)	📦	📦	●	●	●	€
P-CT202020	20	50	400	✓	✓		0,448
P-CT202025	25	25	250	✓	✓		0,503
P-CT202032	32	10	120	✓	✓		0,714
P-202040	40	5	80	✓	✓		1,486
P-202050	50	4	40	✓	✓		2,343
P-202063	63	2	20	✓	✓		4,413
P-202075	75	2	12	✓	✓		5,971
P-202090	90	1	6	✓	✓		14,200
P-2020110	110	1	4	✓	✓		20,743
P-2020125	125	1	4	✓			35,057
P-2020160	160	1	2	✓			55,857

Accesorios fabricados en PP-RCT - SDR11

CT2020200	200	1	1	✓			195,000
CT2020250	250	1	1	✓			495,000
CT2020315	315	1	1	✓			967,500
CT2020355*	355(SDR17)	1	1	✓			1107,50
CT2020400*	400(SDR17)	1	1	✓			1222,50

*Accesorios Manufacturados

CODO HEMBRA



Ref.	Ø (mm)	📦	📦	●	●	●	€
P-CT208020	20x1/2"	20	200	✓	✓		2,243
P-CT208025	25x3/4"	10	100	✓	✓		3,434
P-CT208026	25x1/2"	10	100	✓	✓		2,850
P-CT208033	32x3/4"	5	50	✓	✓		3,659
P-CT208032	32x1"	5	50	✓	✓		7,420

CODO MACHO



Ref.	Ø (mm)	📦	📦	●	●	●	€
P-CT209020	20x1/2"	20	140	✓	✓		2,686
P-CT209025	25x3/4"	10	100	✓	✓		4,700
P-CT209026	25x1/2"	10	100	✓	✓		3,200
P-CT209033	32x3/4"	5	50	✓	✓		4,900
P-CT209032	32x1"	5	50	✓	✓		7,300

CODO HEMBRA C/ PLACA



Ref.	Ø (mm)	📦	📦	●	●	●	€
P-212020	20x1/2"	10	100	✓	✓		2,450
P-212026	25x1/2"	10	100	✓	✓		2,450
P-212025	25x3/4"	10	100	✓	✓		4,857

CODO LOCO 90°



Ref.	Ø (mm)	📦	●	●	●	€
P-208020-L	20x3/4"	1	✓	✓		16,780
P-208025-L	25x1"	1	✓	✓		19,500
P-208026-L	25x3/4"	1	✓	✓		21,340
P-208033-L	32x11/4"	1	✓	✓		27,660
P-208032-L	32x1"	1	✓	✓		24,980

Available colors: ● Ral Design System 150 50 30 ● Ral Design System 270 30 35 ● Ral Design System 100 90 05

TE MACHO



Ref.	Ø (mm)	Weight	Volume	●	●	●	€
P-CT233020	20x1/2"	10	100	✓	✓		2,950
P-CT233025	25x3/4"	10	100	✓	✓		4,120
P-CT233026	25x1/2"	10	100	✓	✓		3,814
P-CT233032	32x1"	5	50	✓	✓		8,100
P-CT233033	32x3/4"	5	50	✓	✓		5,100

TE HEMBRA



Ref.	Ø (mm)	Weight	Volume	●	●	●	€
P-CT232020	20x1/2"	20	160	✓	✓		2,590
P-CT232025	25x3/4"	10	100	✓	✓		3,700
P-CT232026	25x1/2"	10	100	✓	✓		3,100
P-CT232033	32x3/4"	5	50	✓	✓		4,100
P-CT232032	32x1"	5	50	✓	✓		6,800

TE REDUCIDA



Ref.	Ø (mm)	Weight	Volume	●	●	●	€
P-CT231020	25x20x20	20	140	✓	✓		0,798
P-CT231023	25x25x20	20	140	✓	✓		0,798
P-CT231025	25x20x25	20	140	✓	✓		0,798
P-231032	32x20x32	10	80	✓	✓		1,450
P-CT231033	32x25x32	10	80	✓	✓		1,450
P-231035	32x25x25	10	80	✓	✓		1,450
P-231041	40x20x40	5	50	✓	✓		1,920
P-231042	40x25x40	5	50	✓	✓		1,920
P-231043	40x32x40	5	50	✓	✓		1,920
P-231052	50x25x50	4	32	✓	✓		3,029
P-231053	50x32x50	4	32	✓	✓		3,029
P-231054	50x40x50	4	32	✓	✓		3,029
P-231062	63x25x63	2	12	✓	✓		5,200
P-231063	63x32x63	2	12	✓	✓		5,200
P-231064	63x40x63	2	12	✓	✓		5,200
P-231065	63x50x63	2	12	✓	✓		5,200
P-231074	75x40x75	1	8	✓	✓		10,200
P-231075	75x50x75	1	8	✓	✓		10,200
P-231076	75x63x75	1	8	✓	✓		10,200
P-231097	90x75x90	1	4	✓	✓		16,286
P-2310110	110x90x110	1	2	✓	✓		21,314
P-2310125	125x110x125	1	1	✓	✓		56,257

TE SIMPLE



<=125 - Soldadura Macho/Hembra
>125 - Soldadura a Top

Ref.	Ø (mm)	Weight	Volume	●	●	●	€
P-CT230020	20	25	250	✓	✓		0,430
P-CT230025	25	15	150	✓	✓		0,510
P-CT230032	32	10	80	✓	✓		0,950
P-230040	40	5	50	✓	✓		1,670
P-230050	50	2	30	✓	✓		2,955
P-230063	63	2	12	✓	✓		5,360
P-230075	75	1	9	✓	✓		7,340
P-230090	90	1	6	✓	✓		14,120
P-2300110	110	1	4	✓	✓		22,670
P-2300125	125	1	2	✓			39,120
P-2300160	160	1	1	✓			73,429

Accesorios fabricados en PP-RCT - SDR11

CT2300200	200	1	1	✓			253,000
CT2300250	250	1	1	✓			640,000
CT2300315	315	1	1	✓			1306,000
CT2300355*	355 _(SDR17)	1	1	✓			1532,000
CT2300400*	400 _(SDR17)	1	1	✓			2000,000

*Accesorios Manufacturados

Available colors: ● Ral Design System 150 50 30 ● Ral Design System 270 30 35 ● Ral Design System 100 90 05

MANGUITO



Ref.	Ø (mm)	👜	📦	●	●	●	€
P-CT200020	20	50	500	✓	✓		0,293
P-CT200025	25	40	320	✓	✓		0,380
P-CT200032	32	20	200	✓	✓		0,510
P-200040	40	10	100	✓	✓		0,950
P-200050	50	5	60	✓	✓		1,781
P-200063	63	4	32	✓	✓		2,570
P-200075	75	2	24	✓	✓		4,344
P-200090	90	1	13	✓	✓		7,230
P-2000110	110	1	10	✓	✓		12,914
P-2000125	125	1	6	✓			17,829

REDUCCIÓN



<=125 - Soldadura Macho/Hembra
>125 - Soldadura a Top

Ref.	Ø (mm)	👜	📦	●	●	●	€
P-CT238025	25x20	50	500	✓	✓		0,250
P-CT238032	32x20	30	300	✓	✓		0,370
P-CT238033	32x25	30	300	✓	✓		0,370
P-238040	40x20	20	200	✓	✓		0,830
P-238041	40x25	20	200	✓	✓		0,830
P-238042	40x32	20	160	✓	✓		0,830
P-238051	50x20	10	100	✓	✓		1,180
P-238055	50x25	10	100	✓	✓		1,180
P-238052	50x32	10	100	✓	✓		1,180
P-238050	50x40	10	100	✓	✓		1,180
P-238062	63x25	5	60	✓	✓		1,893
P-238065	63x32	5	60	✓	✓		1,893
P-238063	63x40	5	60	✓	✓		2,260
P-238067	63x50	5	60	✓	✓		2,260
P-238075	75x50	4	40	✓	✓		2,456
P-238076	75x63	4	32	✓	✓		2,456
P-238096	90x63	2	16	✓	✓		6,250
P-238097	90x75	2	16	✓	✓		6,250
P-238116	110x63	1	12	✓	✓		7,650
P-2380117	110x75	1	12	✓	✓		7,650
P-2380110	110x90	1	12	✓	✓		10,850
P-2380125	125x110	1	6	✓			19,225
P-2380160	160x110	1	8	✓			40,171
P-2380161	160x125	1	6	✓			44,314

Accesorios fabricados en PP-RCT - SDR11

CT2380200	200x160	1	1	✓			112,500
CT2380250	250x160	1	1	✓			237,500
CT2380251	250x200	1	1	✓			237,500
CT2380315	315x200	1	1	✓			752,500
CT2380316	315x250	1	1	✓			752,500

ENLACE ROSCA HEMBRA



Ref.	Ø (mm)	👜	📦	●	●	●	€
P-CT234020	20x1/2"	20	200	✓	✓		2,495
P-CT234025	25x3/4"	10	150	✓	✓		2,725
P-CT234026	25x1/2"	10	150	✓	✓		2,948
P-CT234033	32x3/4"	10	100	✓	✓		3,743
P-CT234032	32x1"	10	100	✓	✓		6,029
P-234040	40x1 1/4"	5	50	✓	✓		12,457
P-234050	50x1 1/2"	4	36	✓	✓		14,286
P-234063	63x2"	2	20	✓	✓		18,314
P-234075	75x2 1/2"	1	15	✓	✓		35,000
P-234090	90x3"	1	16	✓	✓		56,286
P-2340110	110x4"	1	6	✓	✓		85,057

ENLACE ROSCA MACHO



Ref.	Ø (mm)	👜	📦	●	●	●	€
P-CT325020	20x1/2"	20	200	✓	✓		2,910
P-CT325025	25x3/4"	10	150	✓	✓		5,760
P-CT325026	25x1/2"	10	150	✓	✓		3,320
P-CT325033	32x3/4"	10	100	✓	✓		6,120
P-CT325032	32x1"	10	100	✓	✓		8,450
P-325040	40x1 1/4"	4	40	✓	✓		13,614
P-325050	50x1 1/2"	4	32	✓	✓		21,547
P-325063	63x2"	2	16	✓	✓		31,900
P-325075	75x2 1/2"	1	12	✓	✓		51,900
P-325090	90x3"	1	8	✓	✓		78,900
P-3250110	110x4"	1	3	✓	✓		108,900

SALVATUBOS



Ref.	Ø (mm)	👜	📦	●	●	●	€
P-UC20	20	10	100	✓	✓		1,238
P-UC25	25	10	60	✓	✓		1,413
P-UC32	32	5	40	✓	✓		1,645

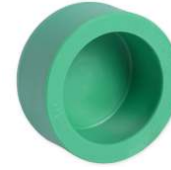
Available colors: ● Ral Design System 150 50 30 ● Ral Design System 270 30 35 ● Ral Design System 100 90 05

ENLACE DESMONTABLE (LATON MACHO)



Ref.	Ø (mm)	👜	📦	●	●	●	€
P-200020-DM	20x1/2"	10	80	✓			6,450
P-200025-DM	25x3/4"	10	60	✓			7,540
P-200032-DM	32x1"	5	30	✓			12,120
P-200040-DM	40x1 1/4"	2	16	✓			14,540
P-200050-DM	50x1 1/2"	2	12	✓			28,625

TAPÓN



<=125 - Soldadura Macho/Hembra

>125 - Soldadura a Top

Ref.	Ø (mm)	👜	📦	●	●	●	€
P-242020	20	50	500	✓	✓		0,285
P-242025	25	50	500	✓	✓		0,343
P-242032	32	30	240	✓	✓		0,423
P-242040	40	20	200	✓	✓		0,863
P-242050	50	10	100	✓	✓		1,140
P-242063	63	5	50	✓	✓		2,498
P-242075	75	2	40	✓	✓		3,740
P-242090	90	1	24	✓	✓		5,025
P-2420110	110	1	10	✓	✓		8,918
P-2420125	125	1	10	✓			14,225
P-2420160	160	1	8	✓			17,400

ENLACE DESMONTABLE (LATON HEMBRA)



Ref.	Ø (mm)	👜	📦	●	●	●	€
P-200020-DH	20x1/2"	10	80	✓			5,300
P-200025-DH	25x3/4"	10	60	✓			6,400
P-200032-DH	32x1"	5	30	✓			10,230
P-200040-DH	40x1 1/4"	2	16	✓			12,475
P-200050-DH	50x1 1/2"	2	12	✓			26,340

ENLACE RECTO CON TUERCA LOCA



Ref.	Ø (mm)	👜	●	●	●	€
P-234020-L	20x3/4"	1	✓	✓		5,480
P-234025-L	25x1"	1	✓	✓		8,760
P-234026-L	25x3/4"	1	✓	✓		6,240
P-234032-L	32x1 1/4"	1	✓	✓		15,190
P-234033-L	32x1"	1	✓	✓		9,990
P-234040-L	40x1 1/2"	1	✓	✓		32,980
P-234050-L	50x2"	1	✓	✓		41,890
P-234063-L	63x2.1/2"	1	✓	✓		54,780
P-234075-L	75x3"	1	✓	✓		96,980

ENLACE DESMONTABLE (SIMPLES)

NOVEDAD



Ref.	Ø (mm)	👜	📦	●	●	●	€
P-200020-D	20	10	80	✓			4,000
P-200025-D	25	10	60	✓			5,750
P-200032-D	32	5	30	✓			9,210
P-200040-D	40	2	16	✓			12,890
P-200050-D	50	2	12	✓			18,000
P-200063-D	63	2	10	✓			27,500

Available colors: ● Ral Design System 150 50 30 ● Ral Design System 270 30 35 ● Ral Design System 100 90 05

INJERTO SIMPLE



NOTA: La herramienta que se utiliza para la perforación: BR32(1) y 25(2)

Ref.	Ø (mm)	👜	📦	●	●	●	€
P-480063(2)	63-75-90 x 20	50	400		✓	✓	0,360
P-480064(2)	63-75-90 x 25	40	320		✓	✓	0,360
P-480065(1)	63-75-90 x 32	20	200		✓	✓	0,360
P-480110(2)	110-125-160 x 20	50	400		✓	✓	0,460
P-480111(2)	110-125-160 x 25	40	320		✓	✓	0,460
P-480112(1)	110-125-160 x 32	20	200		✓	✓	0,460

INJERTO HEMBRA



NOTA: La herramienta que se utiliza para la perforación: BR32

Ref.	Ø (mm)	👜	📦	●	●	●	€
P-490063	63-75-90 x 1/2"	20	200		✓	✓	3,571
P-490064	63-75-90 x 3/4"	20	200		✓	✓	3,571
P-490110	110-125-160 x 1/2"	20	200		✓	✓	4,653
P-490111	110-125-160 x 3/4"	20	200		✓	✓	4,653

INJERTO MACHO



NOTA: La herramienta que se utiliza para la perforación: BR32

Ref.	Ø (mm)	👜	📦	●	●	●	€
P-500063	63/75/90x1/2"	20	200		✓	✓	6,567
P-500064	63/75/90x3/4"	20	200		✓	✓	6,567
P-500110	110/125/160x1/2"	20	200		✓	✓	6,967
P-500111	110/125/160x3/4"	20	200		✓	✓	6,967

ABRAZADERA



Ref.	Ø (mm)	👜	📦	●	●	●	€
P-AB20	20	100	1000		✓	✓	1,163
P-AB25	25	100	800		✓	✓	1,248
P-AB32	32	50	500		✓	✓	1,423
P-AB40	40	30	240		✓	✓	1,745

PORTA BRIDA HEMBRA



<= 125 - Soldadura Macho/Hembra | >125 - Soldadura a Top

Ref.	Ø (mm)	👜	●	●	●	€
P-PBRIDA40H	40	1	✓	✓		2,686
P-PBRIDA50H	50	1	✓	✓		4,286
P-PBRIDA63H	63	1	✓	✓		5,857
P-PBRIDA75H	75	1	✓	✓		6,371
P-PBRIDA90H	90	1	✓	✓		11,629
P-PBRIDA110H	110	1	✓	✓		15,571
P-PBRIDA125H	125	1	✓			30,829
P-PBRIDA160H	160	1	✓			42,629

Accesorios fabricados en PP-RCT - SDR11

CTPBRIDA200H	200	1	✓			102,000
CTPBRIDA250H	250	1	✓			173,000
CTPBRIDA315H	315	1	✓			260,000
CTPBRIDA355H	355	1	✓			339,000
CTPBRIDA400H	400	1	✓			422,000

TAPÓN ROSCADO

NOVIDAD



Ref.	Ø (mm)	👜	📦	●	●	●	€
P-237020-V	1/2"	100	1000			✓	1,400
P-237025-V	3/4"	-	-			✓	1,600

Available colors: ● Ral Design System 150 50 30 ● Ral Design System 270 30 35 ● Ral Design System 100 90 05

CUERPO DE VÁLVULA



Ref.	Ø (mm)						€
P-244020	20x1/2"	10	100		✓	✓	5,405
P-244025	25x3/4"	10	100		✓	✓	5,424
P-244032	32x1"	10	50		✓	✓	7,787

VÁLVULA DE CIERRE (CON PUÑO)



Ref.	Ø (mm)						€
P-244020-CP	20	5	50		✓	✓	16,125
P-244025-CP	25	5	50		✓	✓	17,654
P-244032-CP	32	3	30		✓	✓	22,527

VÁLVULA DE CIERRE (ESFERA)



Ref.	Ø (mm)						€
244020-EI	20	5	80		✓	✓	8,990
244025-EI	25	5	50		✓	✓	12,375
244032-EI	32	5	30		✓	✓	16,050
244040-EI	40	4	20		✓	✓	29,950
244050-EI	50	2	16		✓	✓	44,750
244063-EI	63	1	9		✓	✓	80,150
244075-EI	75	1	6		✓	✓	137,700
244090-EI	90	1	4		✓	✓	237,000
2440110-EI	110	1	2		✓	✓	419,200
2440125-EI	125	1	1		✓	✓	692,000

VÁLVULA DE CIERRE (PUÑO VOLANTE)



Ref.	Ø (mm)						€
P-244020-VLO	20	5	50		✓	✓	8,945
P-244025-VLO	25	5	50		✓	✓	9,134
P-244032-VLO	32	5	30		✓	✓	14,147

VÁLVULA DE CIERRE (REGULACIÓN OCULTA)



Ref.	Ø (mm)						€
P-244020-RO	20	5	50		✓	✓	14,950
P-244025-RO	25	5	50		✓	✓	15,120
P-244032-RO	32	5	30		✓	✓	18,456

VÁLVULA DESMONTABLE



Ref.	Ø (mm)					€
P-244020-X	20x1/2"	70		✓	✓	14,975
P-244025-X	25x3/4"	50		✓	✓	20,375
P-244032-X	32x1"	30		✓	✓	32,498
P-244040-X	40x1 1/4"	20		✓	✓	50,398
P-244050-X	50x1 1/2"	8		✓	✓	88,125

Available colors: ● Ral Design System 150 50 30 ● Ral Design System 270 30 35 ● Ral Design System 100 90 05

BRIDA EN ACERO



Ref.			€
BRIDA40	40	1	23,850
BRIDA50	50	1	28,905
BRIDA63	63	1	32,395
BRIDA75	75	1	36,645
BRIDA90	90	1	52,465
BRIDA110	110	1	64,080

BRIDA EN ACERO REVESTIDA



Ref.			€
BRIDA40-REV	40	1	28,365
BRIDA50-REV	50	1	31,774
BRIDA63-REV	63	1	39,760
BRIDA75-REV	75	1	47,352
BRIDA90-REV	90	1	49,777
BRIDA110-REV	110	1	57,000
BRIDA125-REV	125	1	70,000
BRIDA160-REV	160	1	81,740
BRIDA200-REV	200	1	93,000
BRIDA250-REV	250	1	110,000
BRIDA315-REV	315	1	178,000
BRIDA355-REV	355	1	348,000
BRIDA400-REV	400	1	397,000

MECANISMO P/ VÁLVULA DE CIERRE



Ref.			€
BSPCN12	1/2"	1	9,545
BSPCN34	3/4"	1	9,696
BSPCN1	1"	1	10,669

MECANISMO DE PUÑO

NOVIDAD



Ref.			€
BSPCP12	1/2"	1	10,720
BSPCP34	3/4"	1	12,230
BSPCP1	1"	1	14,740

MECANISMO DE PUÑO VOLANTE



Ref.			€
BSPCFLO12	1/2"	1	3,540
BSPCFLO34	3/4"	1	3,710
BSPCFLO1	1"	1	6,360

KIT AUMENTO P/ VÁLVULA DE CIERRE

NOVIDAD

NOVIDAD



RO



CP

Ref.			€
KIT2032-RO	25	1	3,535
KIT2032-CP	25	1	2,775

Available colors: ● Ral Design System 150 50 30 ● Ral Design System 270 30 35 ● Ral Design System 100 90 05

HR helisystem®

E-FUSION

MANGUITO



Ref.	Ø (mm)	●	📦	€
Es200025	25	✓	200	12,222
ES200032	32	✓	200	14,000
ES200040	40	✓	150	16,270
ES200050	50	✓	120	18,016
ES200063	63	✓	60	23,413
ES200075	75	✓	45	32,222
ES200090	90	✓	30	41,984
ES2000110	110	✓	16	60,079
ES2000125	125	✓	12	81,825
ES2000160	160	✓	6	118,730
ES2000200	200	✓	1	149,000
ES2000250	250	✓	1	298,000

■ Novidad

REDUCCIÓN



Ref.	Ø (mm)	●	📦	€
Es238065	63x32	✓	49	26,429
ES238063	63x40	✓	49	27,143
ES238067	63x50	✓	49	31,429
ES238076	75x63	✓	49	37,381
ES238096	90x63	✓	30	40,952
ES2380116	110x63	✓	16	60,714
ES2380117	110x75	✓	16	67,222
ES2380110	110x90	✓	16	65,238
ES2380126	125x90	✓	12	85,317
ES2380161	160x110	✓	6	115,714

CODO 45°



Ref.	Ø (mm)	●	📦	€
ES202063	63	✓	40	38,571
ES202090	90	✓	15	63,730
ES2020110	110	✓	12	84,762
ES2020125	125	✓	6	124,048
ES2020160	160	✓	4	175,317

CODO 90°



Ref.	Ø (mm)	●	📦	€
ES206063	63	✓	36	39,365
ES206075	75	✓	20	49,524
ES206090	90	✓	12	63,175
ES2060110	110	✓	8	90,714
ES2060125	125	✓	6	136,587
ES2060160	160	✓	4	187,937

TE SIMPLE



Ref.	Ø (mm)	●	📦	€
ES230063	63	✓	24	36,905
ES230075	75	✓	18	53,254
ES230090	90	✓	10	65,873
ES2300110	110	✓	8	96,905
ES2300125	125	✓	5	141,270
ES2300160	160	✓	2	217,460

HR helisystem®

TOOLS
POLIFUSOR SET A


Ref.			€
POLIR1	20-32	1	548,567
POLIR2	20-63	1	873,656
INCLUIDO: Caja Metálica + Polifusor + Soporte + Matrices			

POLIFUSOR DE BANCADA


Ref.			€
POLI125	40-125	1	A consultar

POLIFUSOR TOP A TOP


Ref.			€
POLI160TOP	40-160	1	A consultar
POLI250TOP	90-250	1	A consultar
POLI315TOP	90-315	1	A consultar
POLI500TOP	200-500	1	A consultar

MATRICE REPARACIÓN


Ref.			€
MR-07	7mm	1	122,230
MR-11	11mm	1	153,340

POLIFUSOR SET B


Ref.			€
POLIR2/1290	20-63	1	225,875

POLIFUSOR


Ref.			€
POLI110	20-110	1	475,560
POLIR-125	20-125	1	558,890

POLIFUSOR ELECTROSOLDABLE


Reference		€
CHILI40V	1	A consultar

TIJERA PP-R


Ref.			€
TES 40	16-40	1	85,714
TES 63	16-63	1	437,143
TES 75	16-75	1	1.167,143

HERRAMIENTAS DE DERIVACIÓN

NOVIDAD



Ref.			€
MATRIZ / MATRICES / BUCHE / MATRICE			
DMTR6325	63x25/20	1	157,000
DMTR7525	75x25/20	1	157,000
DMTR9025	90x25/20	1	157,000
DMTR11025	110x25/20	1	157,000
DMTR12525	125x25/20	1	157,000
DMTR16025	160x25/20	1	157,000
DMTR6332	63x32	1	172,000
DMTR7532	75x32	1	172,000
DMTR9032	90x32	1	172,000
DMTR11032	110x32	1	172,000
DMTR125032	125x32	1	172,000
DMTR16032	160x32	1	172,000
BROCA / THREADED / PERCEUSE / BROCA			
BR-25	25/20	1	93,000
BR-32	32	1	122,000
CALIBRADOR / ESCARIADOR / CALIBRATOR / ÉTRIERS			
ESDMTR-25	25/20	1	73,000
ESDMTR-32	32	1	88,000

HR heliklima[®]
TOOLS

ESCREADOR



Ref.			€
CALIBRAES-S32	16/20/25/32	1	108,571
CALIBRAES-S63	40/50/63	1	247,143
CALIBRAES-S75	75	1	857,143

MAQUINA PARA PRENSAR



Ref.		€
PRESS-ELECTREMS	1	A consultar
PRESS-ELECTREMSACC	1	A consultar
PRESS-BATREMS	1	A consultar

MATRICES



Ref.			€
MTR-20	20	1	83,340
MTR-25	25	1	92,230
MTR-32	32	1	111,120
MTR-40	40	1	121,120
MTR-50	50	1	138,890
MTR-63	63	1	157,780
MTR-75	75	1	206,670
MTR-90	90	1	252,230
MTR-110	110	1	295,560
MTR-125	125	1	346,670

MORDENTE U / RF



Ref.		€
MORD/RF-16 PEX	1	A consultar
MORD/RF-20 PEX	1	A consultar
MORD/RF-25 PEX	1	A consultar
MORD/RF-32 PEX	1	A consultar
MORD-16 MK	1	A consultar
MORD-18 MK	1	A consultar
MORD-20 MK	1	A consultar
MORD-25 MK	1	A consultar
MORD-32 MK	1	A consultar
MORD-40 MK	1	A consultar
MORD-50 MK	1	A consultar
MORD-63 MK	1	A consultar
MORD-75 MK	1	A consultar

Acessórios KLIMAPRESS - U Acessórios PE-X-RF

TIJERA



Ref.			€
KC35	16/35	1	18,206



HR helisystem®

HR helisystem®
E-FUSION

HR helisystem®
TOOLS

HR romafaser®

HR romaklima®

HR pexroma®

HR romaplus®

HR heliklima®

HR klimapress®

HR klimapress®
TOOLS

HELIROMA - Plásticos SA
Zona Industrial
EN-1 / IC2 km 250,5
3850-184 Albergaria-a-Velha . Portugal
t + 351 234 523 373
f + 351 234 523 375
e comercial@heliroma.pt
GPS: Lat: 40.716484°(N) Lng: 8.48552° (W)

Cofinanciado por:

